

Jukebox

Gift Card Holder Asymmetrical Fold Over

- Text and important design elements should be kept away from the safety margin.
- For bleed, artwork should extend 0.125 inches past the dieline (covering the bleed area).
- Delete all template elements (including the dieline) before exporting the press ready PDF file for uploading to [Jukeboxprint.com](https://jukeboxprint.com).



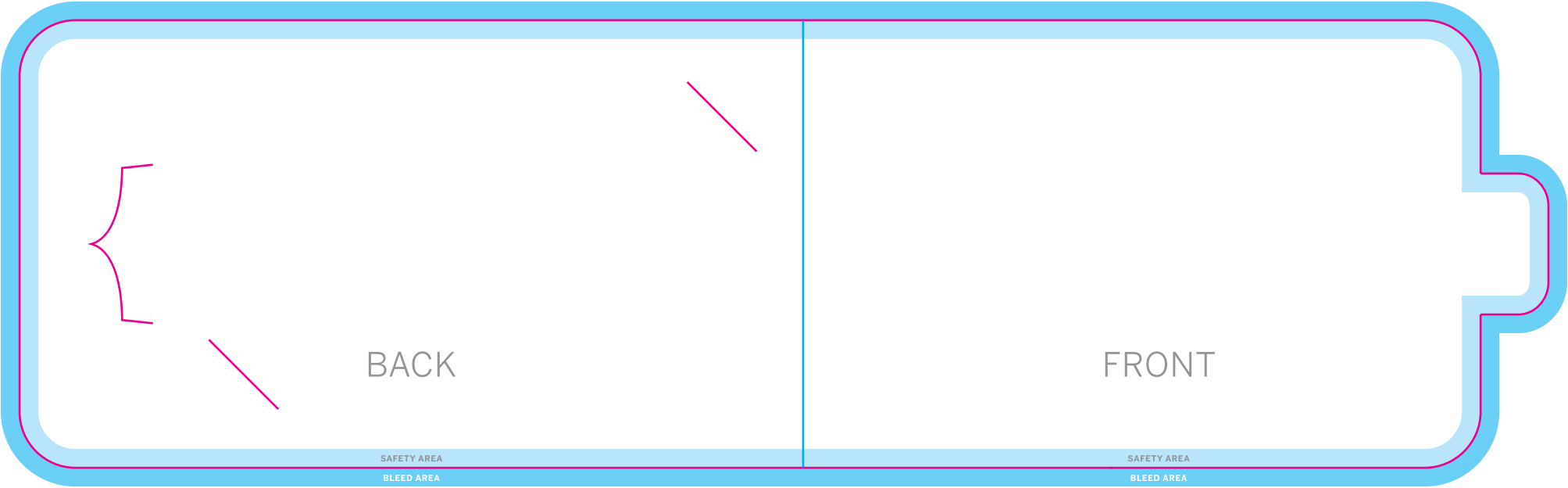
DIELINE



BLEED AREA



SAFETY MARGIN



BACK

FRONT

SAFETY AREA

BLEED AREA

SAFETY AREA

BLEED AREA

INSIDE LEFT

SAFETY AREA

BLEED AREA

INSIDE RIGHT

SAFETY AREA

BLEED AREA

(THIS AREA WILL SHOW NEXT TO THE
FRONT COVER WHEN ASSEMBLED)